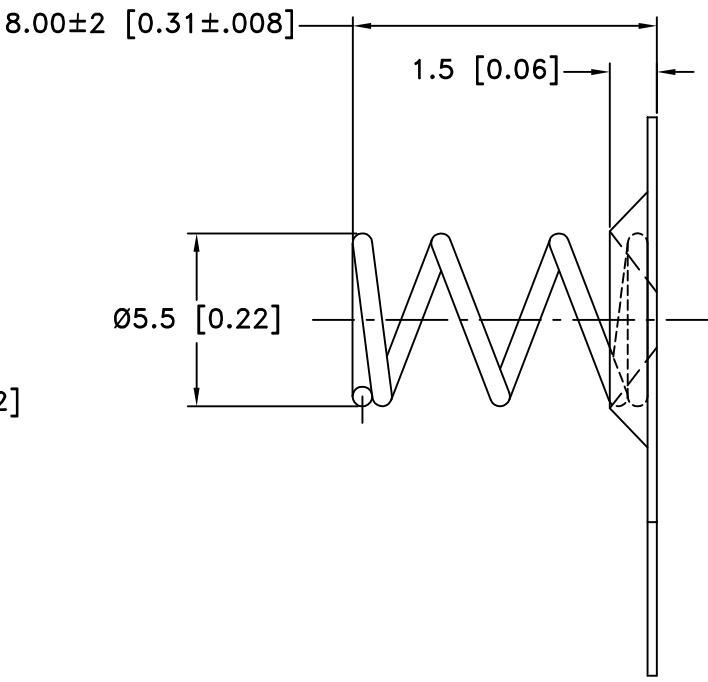
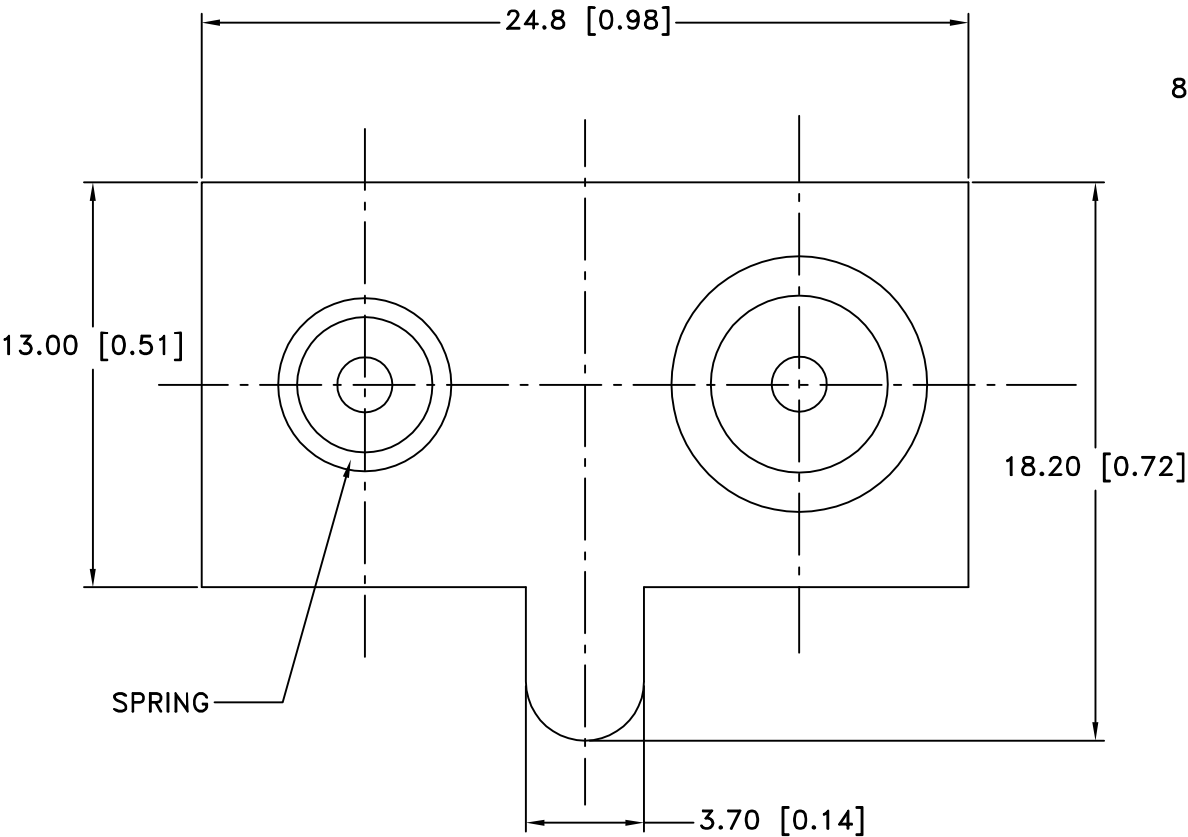



| Date | SYM | REVISION RECORD | AUTH | DR. | CK. |
|---------|-----|-------------------------|------|------|-----|
| 8/18/05 | A | BASE MATERIAL WAS BRASS | T.B. | B.S. | |
| 7/08/06 | B | Added "ROHS COMPLIANT" | T B | B S | |
| | | | | | |
| | | | | | |
| | | | | | |



- NOTES:
1. BASE: STEEL, 0.3mm (0.012") THICK. ELECTROLYTIC TIN PLATED.
 2. SPRING: SWG 60C ELASTIC STEEL, 0.61mm (0.024") THICK. NICKLE PLATED.
 3. ROHS COMPLIANT

| | | | |
|--------------------------------|---|-------------------------|------------------|
| Tolerance (Except as noted) |  Memory Protection Devices, Inc 200 Broad Hollow Road, Farmingdale, New York 11735 | Scale | Drawn By B.S. |
| | | | Approved By T.B. |
| decimal ±.5 (.020) | Title "AA" BATTERY COMMON CONTACT | Date 7/08/06 | |
| Fractional ± .8 (.030) | | Drawing Number SNT54 | |
| Angular ± 3° | | | |